

OUR COMPANY

Polar Global merges the experience of a consolidated technical team coupled with the enthusiasm for creating a brand that portrays quality and reliability. Polar Global HVAC Systems is a multinational family of companies with the vision to become the worldwide HVAC comfort solutions expert. Our mission is to design, develop and provide to worldwide markets integral and efficient solutions, through intelligently controlled, high-quality and sustainable systems.

We are proud of our multilingual and multicultural international team who provides professional and personalized engineering, commercial and logistical local services, through our global offices in Hong Kong, Europe and North America. We also have warehouses in Spain, Canada and USA, to provide fast deliveries to our EMEA, NA, and APEC markets.

Over the years, we have developed excellent professional and personal synergies with companies and people worldwide, allowing us to have specialized market knowledge and a valuable international network to overcome challenges and develop new alliances.

Already considered as the global leader in fan coils, our continuing evolution also includes our controlled environment agriculture specific equipment contained here. We have been supplying the CEA industry for many years and we see our equipment utilized on both small projects of only a few hundred square feet, to several hundred thousand square feet in both the indoor and greenhouse markets including cannabis, flower and produce grow facilities throughout the world.

GLOBAL OFFICES IN:



TABLE OF CONTENTS

01	OUR COMPANY	
04	OUR CEA PRODUCTS	
	DEHUMIDIFIERS	04
	CASSETTE UNITS	08
	FAN COIL UNITS	10
	DESTRATIFICATION VENTILATOR	18
	PANEL FANS	20
	LOW AMBIENT DX SPLIT HEAT PUMP.....	22

AGRICULTURAL DEHUMIDIFIER

SDH/PDH SPLIT



POLARGlobal
HVAC SYSTEMS



PRODUCT DESCRIPTION

The Polar Global Agricultural Dehumidifiers are available in two configurations, Packaged Dehumidification (PDH models) and Split Dehumidification (SDH models) configuration. The SDH model connects to a Remote Condensing Unit (RCU) to allow for reheating the air back to the space or rejecting the heat to the outside and cooling the indoor environment. On board controls automatically switch from dehumidification to cooling mode based on inputs from the space sensors.

When using the SDH configuration, the remote condensing unit allows for the heat absorbed during the dehumidification process to be rejected outside, rather than back into the space, and provide cooling. This offsets the heat from lighting systems, solar heat and other equipment heat gains. Indoor grow facilities with high intensity lighting require cooling even in the winter. In order to maintain the sealed indoor environment, special low ambient cooling equipment is needed. The RCU (Remote Condensing Unit) is designed to provide cooling even in the coldest environments with low ambient capability down to -22°F (-30°C).

TECHNICAL INFORMATION

		SDH/PDH 05	SDH/PDH 10	SDH/PDH 15	SDH/PDH 20
Power Suply	V/Ph/Hz	208-240/1/60	480/3/60	208-240/3/60 - 480/3/60	208-240/3/60 - 480/3/60
MCA	A	50	-	70 (for 480V)	80 (for 480V)
MOCP	A	80	-	130 (for 480V)	150 (for 480V)
Unit Dimensions [W x D x H]	in.	92x44x55	64x38x36	80x36x36	92x44x55
Supply Air Flange	in.	-	32x40	34x60	48x60
Return Air Flange	in.	-	32x40	34x60	44x59

AGRICULTURAL DEHUMIDIFIER

SDH/PDH SPLIT

TECHNICAL INFORMATION

Condition 75°F/50%RH		SDH/PDH 05	SDH/PDH 10	SDH/PDH 15	SDH/PDH 20
Capacity	T	4.38	9.87	15.8	20.5
Output	BTU/Hr	52,620	118,460	189,500	246,350
Airflow	CFM	1,400	2,000	3,600	4,680
Dehumidification	PPD	374	1,001	1,310	1,742
Efficiency	P/kWh	5.00	5.72	4.7	6.11
Operating Current	A	14.7	34.5	18.23	18.23
Operating Power	W	3,388	7,493	12,547	16,311
Condition 80°F/60%RH		SDH/PDH 05	SDH/PDH 10	SDH/PDH 15	SDH/PDH 20
Capacity	T	4.91	11.14	16.6	21.6
Output	BTU/Hr	58,870	133,640	199,100	258,830
Airflow	CFM	1,400	2,000	3,600	4,680
Dehumidification	PPD	551	1,474	1,830	2,379
Efficiency	P/kWh	6.71	7.64	5.4	7.02
Operating Current	A	16.2	38.0	21.77	21.77
Operating Power	W	3,727	8,740	15,350	19,955
Condition 86°F/80%RH		SDH/PDH 05	SDH/PDH 10	SDH/PDH 15	SDH/PDH 20
Capacity	T	6.13	14.01	19.2	25
Output	BTU/Hr	73,500	168,080	230,400	299,520
Airflow	CFM	1,400	2,000	3,600	4,680
Dehumidification	PPD	939	2,049	2,940	3,822
Efficiency	P/kWh	9.15	8.62	6.8	8.84
Operating Current	A	20.2	46.8	27.28	27.28
Operating Power	W	4,653	10,775	19,712	25,626

MOBILE DEHUMIDIFIER

PDHRME



POLARGlobal
HVAC SYSTEMS



PRODUCT DESCRIPTION

The Polar Global mobile dehumidifier is a great option for portable dehumidifying needs due to the highly maneuverable, light-weight yet powerful design. The 135 pints per day performance is suitable for areas as large as 1400 square feet.

Features include a stackable design for easy storage, user friendly interface for full computer control, adjustable handle height, automatic drain and defrost cycles and integrated condensate pump alarm signal.

TECHNICAL INFORMATION

Model		PDHRME-135
Dehumidifying Capacity (AHAM 80°F/60%RH)	PPD	135 220(At Saturation)
Power Consumption	W.	1100
Air Flow Volume (H/M/L)	CFM	588/529/470
Power Supply	V/Ph/Hz	115/1/60
Rated Current	A	10.1
Sound Pressure Level	dB(A)	58
Weight	Lbs	110
Dimensions (W x D x H)	in.	21x24x33
Drain Pump Head	Feet	19
Water Tank Capacity	Pints	4

OVERHEAD DEHUMIDIFIER

SGD



PRODUCT DESCRIPTION

Controlling the humidity in a grow room is a challenging but important function of the HVAC system. Proper humidity control can improve the nutrient uptake rate of the plants and prevent mold growth within the room; not to mention maintaining a safe level of comfort for the workers inside the room.

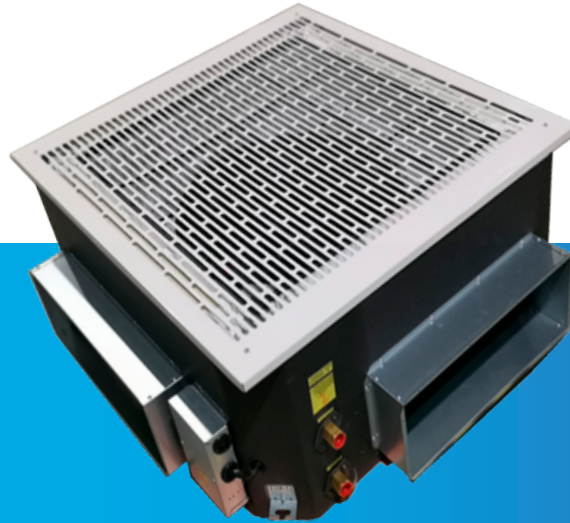
The Polar Air SGD series dehumidifiers offer growers the ability to maintain ideal humidity levels and the ceiling hung design eliminates the need to occupy valuable floor space with HVAC equipment.

TECHNICAL INFORMATION

Model		SGD-500
Dehumidifying Capacity (80°F/60%RH)	PPD	500
Air Volume	CFM	1,648
Coverage area	ft	3,770
Operating Temperature	°F	41-110
Operating Humidity	RH	20-95
Voltage Input	V/Ph/Hz	208-240/1/60
Power Input	W	2900
Running Current	A(V)	13.3 (208-240V)
Refrigerant R410A Charge	Oz	106
Sound Level	dB(A)	75
Control Type		Wall mounted controller
Defrost		Auto
Drainage		Continuous Drain
Unit Dimensions [W x D x H]	in.	49x31x31
Net Weight	Lbs	302

HYDRONIC CASSETTE

GCA



PRODUCT DESCRIPTION

The Hydronic Grow Cassette was developed specifically for the grow industry. The design distributes conditioned air horizontally through 4 discharges with horizontal throws up to 25 feet. Combined with the Polar Air Destratification Ventilator, this duo combines to offer evenly distributed temperatures and air movement throughout the grow room.

TECHNICAL INFORMATION

Model		GCA-2P	GCA-4P
Type		2-pipe 3R	4-pipe 3R+1
Voltage, Frequency, Phase	V/Ph/Hz	208-240/1/60	208-240/1/60
Air Flow	CFM	1,765	1,707
Cooling Capacity	BTU/H	58,000	54,500
Heating Capacity	BTU/H	-	34,100
Power Input	W	193	193
Indoor Sound Pressure	dB(A)	49	49
Rated current	A	2.3	2.3
Indoor DC motor		Yes	Yes
Net Dimensions (W x H x D)	in.	39x16x38	39x16x38
Gross Dimension (W x H x D)	in.	40x17x39	40x17x39
Net Weight	Lbs	101	108
Gross Weight	Lbs	110	117
Features			
Fan Speed		H/M/L	H/M/L
Wired control		Optional	Optional

MEDIUM STATIC DUCTED

PDWB



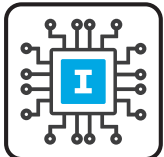
 **POLAR**Global
HVAC SYSTEMS



PRODUCT DESCRIPTION

The Medium ESP Fan coil ducted ranges have been specifically designed to satisfy medium cooling capacity at medium external static pressure applications. The PDWB fan coils offers a solid balance between capacity and size to ensure adequate dehumidification and cooling in space with limited ceiling height.

PRODUCT FEATURES



Intelligent Control

Built in control, field programmable using easy to set configuration directly through the wired wall pad or dipswitches (on specific models) and controlled via infra-red handset and/or the wired wall pad (optional items). It allows control of Master-Slave communication for sub-networks up to 255 Secondary units, and up to 2048 units via BMS (Building Management System) with Modbus platform.



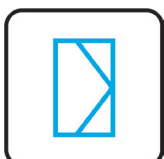
Motors

With factory-installed controller, capable of operating at 3 set speeds to allow precise air balancing, or modulating with a 0-10 VDC signal.



Flexibility

The Medium ESP Fan coil ducted range is available with left or right-hand water connections or easily interchanged on site.



Filtration

Easily removable and washable filters made from self-extinguishing acrylic with EU2 (G2) (Merv 2-4) efficiency class. G4 (Merv 8) efficiency filters are optional.

MEDIUM STATIC DUCTED

PDWB

TECHNICAL INFORMATION¹

Hydronic Medium Static Ducted, 3 row, 2 pipe.

PDWB-3R-[SIZE]-V-AECM		1000	1200	1600	1800	2400
Pipe		2				
Number of Fan Blowers		2				4
Voltage, Frequency, Phase	V/Ph/Hz	110-120 / 1 / 60 208-240 / 1 / 60				
Air Flow	CFM	1061	1118	1914	2080	2541
Cooling Capacity	BTU/H	25358	26403	44926	55091	67299
Heating Capacity	BTU/H	39421	41044	69840	85641	104620
Power Input	W	276	384	420	480	840
Sound Pressure	dB(A)	54	56	55	59	61
Rated current @H 110-120V	A	2.39	3.34	4.57	4.01	7.3
Rated current @H 208-240V	A	1.25	1.75	2.39	2.1	3.82
Net Dimensions (W x D x H)	in.	39x25x11	43x25x11	57x26x15		69x30x16
Net Weight	Lbs	99	110	128	143	165
Fan Speed		H/M/L				

Hydronic Medium Static Ducted, 4row, 2 pipe.

PDWB-4R-[SIZE]-V-AECM		1000	1200	1600	1800	2400
Pipe		2				
Number of Fan Blowers		2				4
Voltage, Frequency, Phase	V/Ph/Hz	110-120 / 1 / 60 208-240 / 1 / 60				
Air Flow	CFM	1010	1076	1881	2015	2490
Cooling Capacity	BTU/H	31259	34127	57995	65945	80807
Heating Capacity	BTU/H	48593	53053	90156	102515	125618
Power Input	W	276	384	525	461	840
Sound Pressure	dB(A)	54	56	55	56	57
Rated current @H 110-120V	A	2.39	3.34	4.57	4.01	7.3
Rated current @H 208-240V	A	1.25	1.75	2.39	2.1	3.82
Net Dimensions (W x D x H)	in.	39x25x11	43x25x11	57x25x15		69x30x16
Net Weight	Lbs	99	110	128	143	165
Fan Speed		H/M/L				

1.- values @H speed

MEDIUM STATIC DUCTED

PDWB

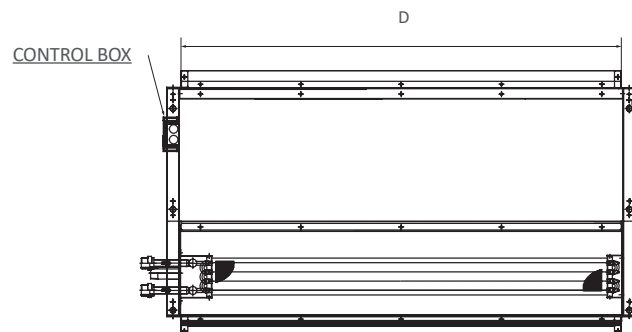
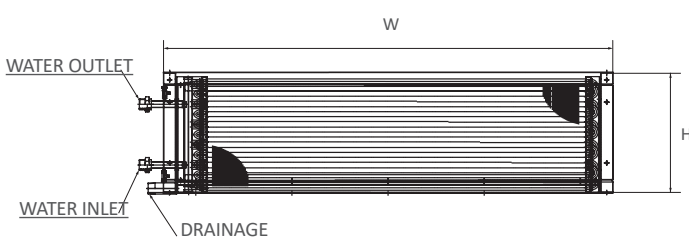
Hydronic Medium Static Ducted, 6 row, 2 pipe..

PDWB-6R-[SIZE]-V-AECM		1000	1200	1600	1800	2400
Pipe		2				
Number of Fan Blowers		2				4
Voltage, Frequency, Phase		V/Ph/Hz 110-120 / 1 / 60 208-240 / 1 / 60				
Air Flow	CFM	905	990	1814	1879	2386
Cooling Capacity	BTU/H	36586	40407	62655	77790	98214
Heating Capacity	BTU/H	56847	62814	97400	120929	152678
Power Input	W	276	384	525	461	840
Sound Pressure	dB(A)	54	56	55	59	57
Rated current @H 110-120V	A	2.39	3.34	4.57	4.01	7.3
Rated current @H 208-240V	A	1.25	1.75	2.39	2.1	3.82
Net Dimensions (W x D x H)	in.	39x25x11	43x25x11	57x26x15		69x30x16
Net Weight	Lbs	110	120	140	155	175
Fan Speed		H/M/L				

Hydronic Medium Static Ducted, 4 + 2 row, 4 pipe.

PDWB-4R+2-[SIZE]-P-AECM		1000	1200	1600	1800	2400
Pipe		4				
Number of Fan Blowers		2				4
Voltage, Frequency, Phase		V/Ph/Hz 110-120 / 1 / 60 208-240 / 1 / 60				
Air Flow	CFM	905	990	1814	1879	2386
Cooling Capacity	BTU/H	28799	31999	56363	62202	78483
Heating Capacity	BTU/H	35884	39413	69038	75610	95790
Power Input	W	276	384	525	461	840
Sound Pressure	dB(A)	54	56	55	56	57
Rated current @H 110-120V	A	2.39	3.34	4.57	4.01	7.3
Rated current @H 208-240V	A	1.25	1.75	2.39	2.1	3.82
Net Dimensions (W x D x H)	in.	39x25x11	43x25x11	57x26x15	57x30x15	69x30x16
Net Weight	Lbs	110	120	140	155	175
Fan Speed		H/M/L				

PRODUCT DIMENSIONS



MINI AHU DUCTED

HAHU



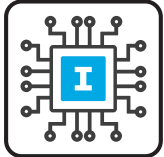
 **POLAR Global**
HVAC SYSTEMS



PRODUCT DESCRIPTION

The Mini AHU ranges have been specifically designed for Horizontal installation and are suitable for ducted air distribution. With double walled construction to achieve low noise levels, an integrated control box, and panels to access components, these units represent one of the most cost effective solutions. Their design also reduces on site installation time and labor costs.

PRODUCT FEATURES



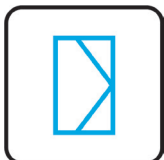
Intelligent Control

Built in control, field programmable using easy to set configuration directly through the wired wall pad or dipswitches (on specific models) and controlled via infra-red handset and/or the wired wall pad (optional items). It allows control of Master-Slave communication for sub-networks up to 255 Secondary units, and up to 2048 units via BMS (Building Management System) with Modbus platform.



Motors

EC motors with integral driven by our controls PCB with constant torque, permanent magnet, with 3 speeds pre-set to allow precise air balancing.



Filtration

Washable filters, made of double-layer acrylic with an aluminum frame containing a G4 (Merv 8) efficiency class. F8 (Merv14) efficiency filters are optional.

MINI AHU DUCTED

HAHU

TECHNICAL INFORMATION¹

Hydronic Horizontal Mini AHU Ductable Unit, 4 row, 2 pipe

HAHU-4R-[Size]-V-AECM		200	300	400	600	800	
Pipe		2					
Number of Fan Blowers		1			2		
Voltage, Frequency, Phase		208-240 / 1 / 60					
Air Flow		CFM	1321	1869	2417	3739	4835
Cooling Capacity		BTU/H	53347	72849	95657	143556	182100
Heating Capacity		BTU/H	82931	113248	148703	223165	283083
Power Input		W	375	501	505	1001	1005
Sound Pressure		dB(A)	67	66	74	75	77
Rated current		A	3.4	4.6	4.6	9.1	9.1
Net Dimensions (W x D x H)		in.	42X43X25	50X43X25	58X43X25	66X43X25	77X43X25
Net Weight		Lbs	330	370	410	490	560
Fan Speed		H/M/L					

Hydronic Horizontal Mini AHU Ductable Unit, 6 row, 2 pipe.

HAHU-6R-[Size]-V-AECM		200	300	400	600	800	
Pipe		2					
Number of Fan Blowers		1			2		
Voltage, Frequency, Phase		208-240 / 1 / 60					
Air Flow		CFM	1209	1789	2341	3577	4683
Cooling Capacity		BTU/H	54859	80713	107062	148860	198866
Heating Capacity		BTU/H	85280	125472	166432	231410	309146
Power Input		W	375	501	505	1001	1005
Sound Pressure		dB(A)	67	66	74	75	77
Rated current		A	3.4	4.6	4.6	9.1	9.1
Net Dimensions (W x D x H)		in.	42X43X25	50X43X25	58X43X25	66X43X25	77X43X25
Net Weight		Lbs	353	412	445	531	602
Fan Speed		H/M/L					

MINI AHU DUCTED

HAHU

TECHNICAL INFORMATION¹

Hydronic Horizontal Mini AHU Ductable Unit, 4+1 row, 4 pipe.

HAHU-4R+1-[Size]-P-AECM		200	300	400	600	800	
Pipe		4					
Number of Fan Blowers		1			2		
Voltage, Frequency, Phase		208-240 / 1 / 60					
Air Flow		CFM	1265	1829	2379	3658	4759
Cooling Capacity		BTU/H	51867	71795	94241	141477	179405
Heating Capacity		BTU/H	48591	66920	85942	123502	157284
Power Input		W	375	501	505	1001	1005
Sound Pressure		dB(A)	67	66	74	75	77
Rated current		A	3.4	4.6	4.6	9.1	9.1
Net Dimensions (W x D X H)		in.	42X43X25	50X43X25	58X43X25	66X43X25	77X43X25
Net Weight		Lbs	342	390	430	512	582
Fan Speed		H/M/L					

Hydronic Horizontal Mini AHU Ductable Unit, 4+2 row, 4 pipe.

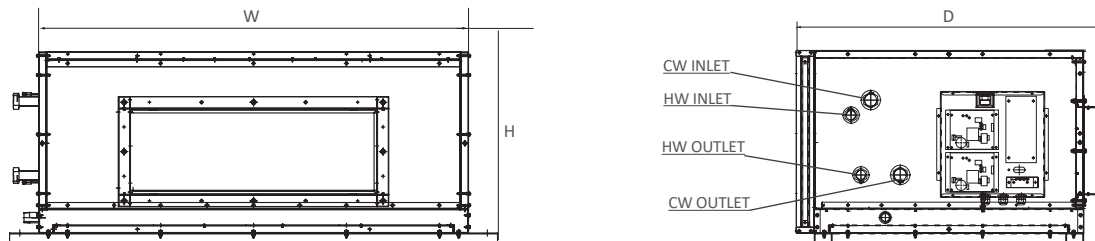
HAHU-4R+2-[Size]-P-AECM		200	300	400	600	800	
Pipe		4					
Number of Fan Blowers		1			2		
Voltage, Frequency, Phase		208-240 / 1 / 60					
Air Flow		CFM	1209	1789	2341	3577	4683
Cooling Capacity		BTU/H	50016	70212	93533	138359	178057
Heating Capacity		BTU/H	71129	101418	131312	190464	246499
Power Input		W	375	501	505	1001	1005
Sound Pressure		dB(A)	67	66	74	75	77
Rated current		A	3.4	4.6	4.6	9.1	9.1
Net Dimensions (W x D X H)		in.	42X43X25	50X43X25	58X43X25	66X43X25	77X43X25
Net Weight		Lbs	353	412	445	531	602
Fan Speed		H/M/L					

TECHNICAL INFORMATION

Hydronic Horizontal Mini AHU Ductable Unit, 6+1 row, 4 pipe.

HAHU-6R+1-[Size]-P-AECM		200	300	400	600	800	
Pipe		4					
Number of Fan Blowers		1			2		
Voltage, Frequency, Phase		208-240 / 1 / 60					
Air Flow		CFM	1153	1748	2303	3497	4607
Cooling Capacity		BTU/H	52828	79500	105441	146624	195855
Heating Capacity		BTU/H	45256	64814	83881	119615	153513
Power Input		W	375	501	505	1001	1005
Sound Pressure		dB(A)	67	66	74	75	77
Rated current		A	1.7	2.28	2.3	4.55	4.57
Net Dimensions (W x D X H)		in.	42X43X25	50X43X25	58X43X25	66X43X25	77X43X25
Net Weight		Lbs	364	408	463	551	623
Fan Speed		H/M/L					

PRODUCT DIMENSIONS



Destratification VENTILATOR

GRV

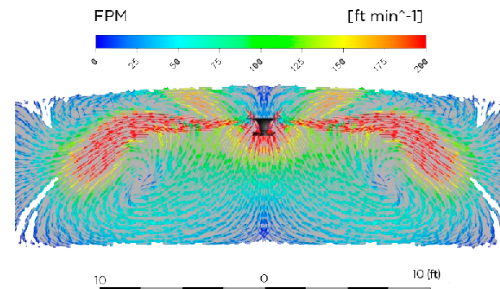
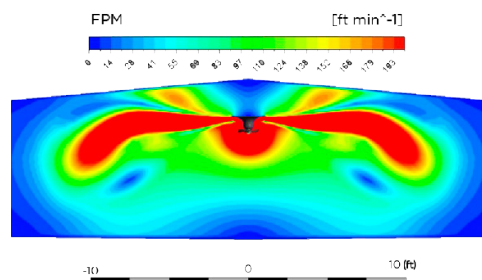


POLARGlobal
HVAC SYSTEMS



PRODUCT DESCRIPTION

Ventilation is very important for grow rooms and greenhouses by helping to move humid air away from plants. The Destratification Ventilator extracts the humid air gently through vertical air movement at the ceiling. This prevents air from blowing directly on the plants causing the leaves to dry quickly, which can happen with wall mounted fans. With the design of the plastic shroud, a single fan can cover an area up to 2,000 square feet with a horizontal air throw of about 25 feet in all directions ensuring even air distribution throughout the grow room and the prevention of "hot spots".



PRODUCT FEATURES



Motor.

The Destratification Ventilator utilizes an EC motor with either fixed speed or variable speed modulation which is controlled by a 0-10VDC, 0-10k variable resistance or PWM control signal.



Performance.

Utilizing EC Motors offers energy savings of up to 50% when compared to traditional on/off AC motors.



Air Distribution.

The Destratification Ventilator is designed for grow room and greenhouses and uses a unique aerodynamic conductor for ultimate air throw and air distribution effectiveness.

Destratification VENTILATOR

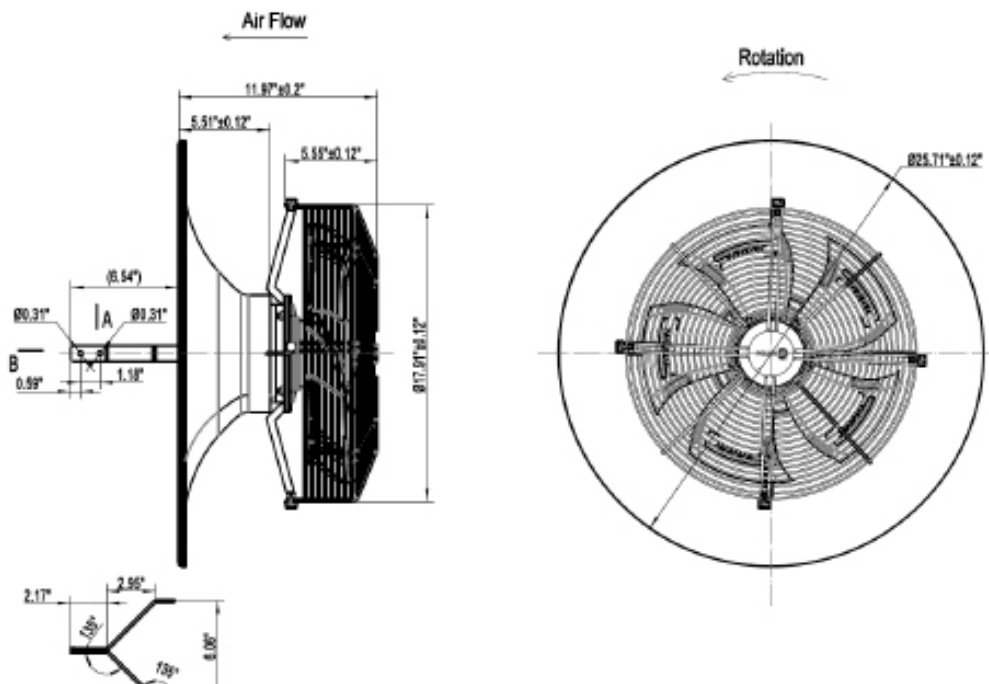


GRV

TECHNICAL INFORMATION

Model		GRV-115	GRV-220
Electrical			
Power Supply	V / Ph / Hz	115/1/60	208-240/1/60
Current Draw	A	4.0 ± 10%	1.42 ± 10%
Power input	W.	340 ± 10%	310 ± 10%
Construction Data			
Fan Diameter	in.	17.91 ± 0.12	
Height		11.97 ± 0.2	
Weight	Lbs	22	
Fan Base Diameter		25.88	
Mounting Bracket Length	in.	11	
Mounting Bracket Width		6.06	
Fan Performance			
Speed	RPM	1,800 ± 10%	
Air Flow	CFM	2,400 ± 10%	
Sound Level Max.	dB(A)	68	
Air Performance			
1,800 RPM	W.	325.3	202.5
	CFM	2,399.4	
1,443 RPM	W.	168.3	109.8
	CFM	1,925.4	

PRODUCT DIMENSIONS



FOLLOW US

Panel FANS

GAF



 **POLAR Global**
HVAC SYSTEMS



PRODUCT DESCRIPTION

The GAF series contains a cutting-edge Electronically Commutated (EC) motor, controlled using precise electronic pulses and smart programming. This enables the GAF fan to increase its speed to boost airflow at a lower noise level. The EC motor is more energy efficient than AC-motors and can save up to 30-80% in energy costs, paying for itself in the long run. Simply put, the GAF is designed to cool and ventilate greenhouses by constantly moving air when needed. Innovative EC-motor with PWM customizable fan speed control, maximizes airflow while reducing energy consumption and noise levels. Heavy-duty build features plastic blades, steel wire guards, and an available steel housing. The fully-enclosed motor is also permanently lubricated and houses dual-ball bearings that are rated at 67,000 hours. The unit is IP-54 rated to be highly resistant to dust and liquids and performs well even in harsh environments

PRODUCT FEATURES



Motor.

The GAF series ventilator utilizes an EC motor with either fixed speed or variable speed modulation which is controlled by a 0-10VDC, 0-10k variable resistance or PWM control signal.



Performance.

Utilizing EC Motors offers energy savings of 30-80% when compared to traditional on/off AC motors.



Air Distribution.

The GAF series ventilator is designed for grow room and greenhouses and uses a unique aerodynamic conductor for ultimate air throw and air distribution effectiveness.

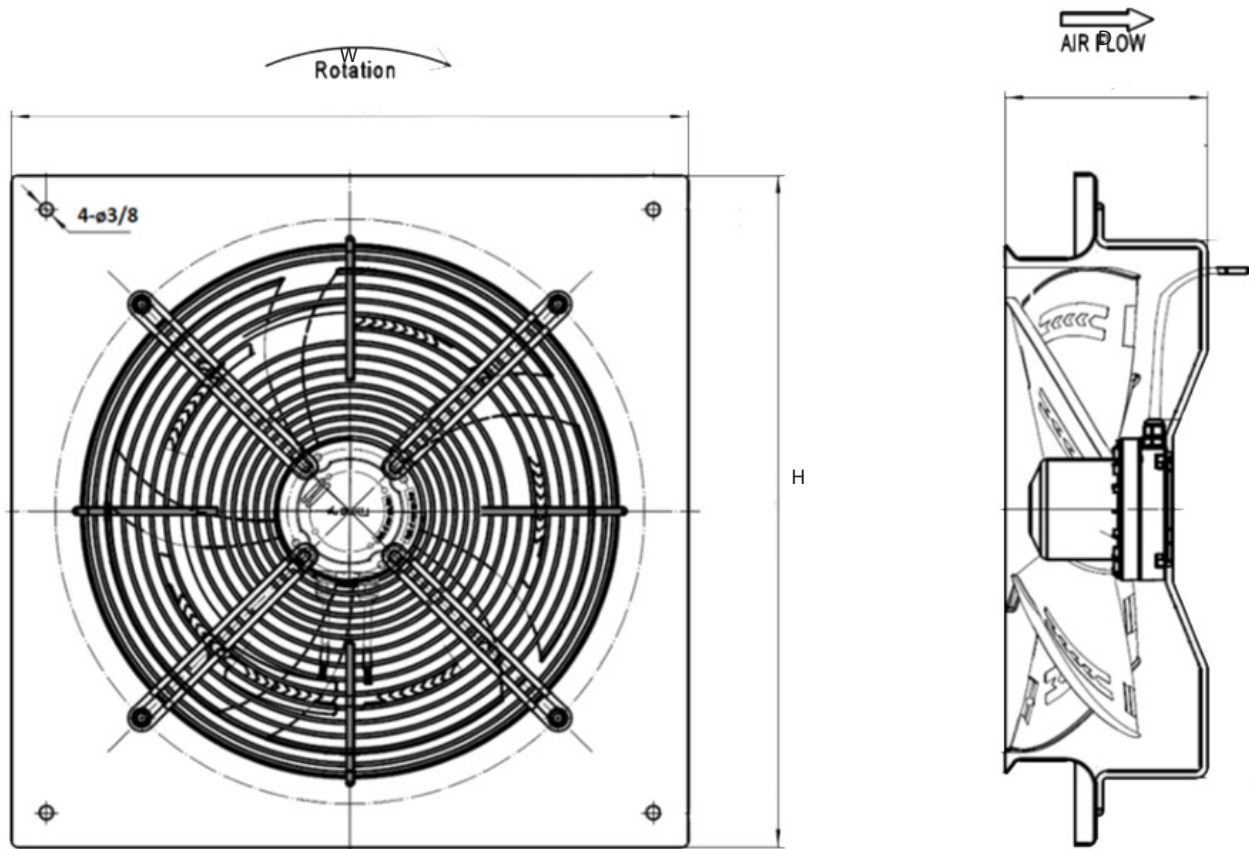
Panel FANS

GAF

TECHNICAL INFORMATION

Model		EC-14	EC-16	EC-20
Power Supply	V/Ph/Hz	220/1/50-60	220-230/1/50-60	230/1/50-60
Input Power	W	170	340	650
Voltage	VAC	240	240	240
Current	A	1.2	1.55	4.6
Speed	RPM	1700	1600	1430
Working Temp. (min/max)	F	-4/+140	-4/+140	-4/+140
Ingress protection			IP 54	
Net Weight	Lbs	11.5	23.4	27.5
Unit Dimensions (W x D x H)	in.	19x5x19	21-x6x21	26x7x26

PRODUCT DIMENSIONS



LOW AMBIENT DX SPLIT

PDXGR



 **POLAR**Global
HVAC SYSTEMS



PRODUCT DESCRIPTION

Low ambient heating is necessary for comfort in most northern cities. When used in the grow industry, DX split systems must also be capable of low ambient cooling. Our wall mount splits can continuously provide indoor cooling/heating even when outdoor temperatures drop to -4°F. This provides the temperature stability and design flexibility for your indoor environmental control system in colder, more northerly climates.

PRODUCT FEATURES



LED
LED Display on Front Panel
LED Dimmer



DC Motor
Indoor DC motor
Outdoor DC motor



Fan
7 indoor fan speeds



Filter
Optional healthy Filters (catechins, VC, HEPA)
Washable High Definition Filter



Controller
LCD Wireless Remote
"I feel" in Remote
Back lighting remote
Wired Control (optional)



Construction
Intelligent Compressor with Pre-heating
2-way drain connection (left or right)
Removable and washable Panel
Chassis Electric heater function



Temperature
46°F (8°C)
°C & °F convertible



Louver
Louver Position Memory
Vertical Auto Swing Louver



Functions
Auto Restart
Auto Defrost
Auto Cleaning
Quiet Mode
24 hours timer

LOW AMBIENT DX SPLIT

PDXGR

TECHNICAL INFORMATION

Model			PDXGR-12	PDXGR-36
Performance				
Type			INVERTER	
Voltage, Frequency, Phase		V/Ph/Hz	208-240/1/60	208-240/1/60
Air Flow		CFM	365	1,060
Capacity (Range)	Cooling	BTU/H	12,000 (4,000 - 13,500)	36,000 (4,000 - 13,500)
	Heating		13,000 (4,000-14,000)	36,000 (12,000-38,000)
SEER		Cooling	25	16.4
HSPF		Heating	12	8.8
EER for Cooling		BTU/W	15.4	8.60
COP for Heating		W/W	4.45	3.05
Power Input	Cooling	W	779	4186
	Heating		856	3459
Moisture Removal		L/Hr	1.2	3
Refrigerant R410A Charge Volume		Oz	46	81
Sound Pressure	Indoor (H/M/L/silence)	dB (A)	41/39/36/30	50/45/40/38
	Outdoor (H)		55	60
Rated Current (Range)	Cooling	A	4.6 (1.2-7.0)	18.5 (2.5-18.5)
	Heating		4.8 (1.2-7.0)	16.0 (2.5-18.5)
Remote Control Adjustable Temperature Range	Cooling	°F	61/-86	61/-86
	Heating		61/-86	61/-86

LOW AMBIENT DX SPLIT

PDXGR

TECHNICAL INFORMATION

Model			PDXGR-12	PDXGR-36
System				
Compressor type			Rotary	Rotary
Compressor MFG			GMCC	GMCC
Compressor model			ATN130D42UFZ	ATF310D43UMT
Expansion Device			EEV	EEV
Condenser material			Copper tube and Aluminum Fin	Copper tube and Aluminum Fin
Piping Size	Liquid Side	in.	1/4	3/8
	Gas Side		3/8	3/4
Test Standard			AHRI 210-240	AHRI 210-240
Working Temperature Range	Cooling	°F	-4°F/-115°F	-4°F/-115°F
	Heating		-13°F/-75°F	-4°F/-75°F
Construction and Packing Dimensions				
Net Dimensions (WxHxD)	Indoor Unit		36x12x9	50x14x10
	Outdoor Unit		31x23x11	34x31x14
Packing Dimensions (WxHxD)	Indoor Unit		39x15x12	54x17x12
	Outdoor Unit		37x25x15	41x35x19
Net Weight	Indoor Unit	Lbs	28.6	40.7
	Outdoor Unit		83.6	140.8
Gross Weight	Indoor Unit		33.0	48.4
	Outdoor Unit		92.4	151.8

HYDRONIC CASSETTE

PCGH- 3ROW



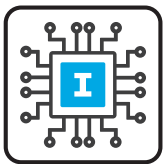
 **POLAR Global**
HVAC SYSTEMS



PRODUCT DESCRIPTION

The iFancoil Series Cassettes have been designed to maximize product flexibility on site and in stock offering easy to remove front panels, filters and integrated drain pumps. The cassettes also feature plug and play one step access to power terminals and auxiliary contacts for quick and easy wiring, easy-to-connect external valves, which can be fitted directly onto the cassette during installation. Found primarily in adjacent offices and non grow area's, the PCGH unit compliments our already impressive offering of CEA focused equipment.

PRODUCT KEY FEATURES



Intelligent Control

Built in control, field programmable using easy to set configuration directly through the wired wall pad or dipperswitches (on specific models) and controlled via infra-red handset and/or the wired wall pad (optional items). It allows control of Master-Slave communication for sub-networks up to 255 Secondary units, and up to 2048 units via BMS (Building Management System) with Modbus platform.



Integrated Condensate Pump and Float Switch

Sauermann drain pump and float switch, easily accesible just by removing the front panel of the cassette for easiness of maintenance.



EC Motors Available

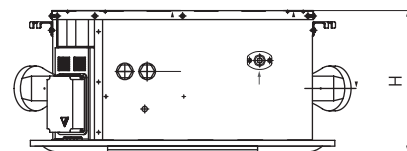
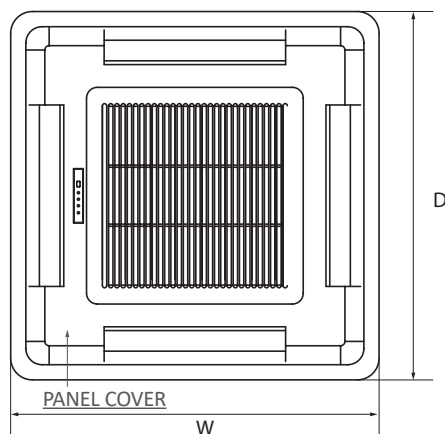
EC with factory-installed controller, capable of operating at 3 set speeds, or modulating with a 0-10 VDC signal.

TECHNICAL INFORMATION¹

Model		PCG-3R-04	PCG-3R-08	PCH-3R-12	PCH-3R-20
Pipe		2			
Size		04	08	12	20
Voltage, Frequency, Phase		V/Ph/Hz 110-120 / 1 / 60 208-240 / 1 / 60			
Air Flow		CFM 338	476	765	1300
Cooling Capacity		BTU/H 11907	17236	24201	39569
Heating Capacity		BTU/H 18509	26794	37622	61512
Power Input		W 21	47	82	224
Sound Pressure		dB(A) 43	50	56	58
Rated current 115V/220V		A 0.37/0.19	0.82/0.43	1.46/0.75	3.90/2.04
Net Dimensions (W x H x D)		in. 26-13/16x 11-3/16x26-13/16		32-11/16x11-3/8x32-11/16	38-9/16x12-9/16x38-9/16
Net Weight		Lbs 64	69	82	118
Fan Speed		H/M/L			

Model		PCG-3R-04	PCG-3R-08	PCH-3R-12	PCH-3R-20
Pipe		4			
Size		04	08	12	20
Voltage, Frequency, Phase		V/Ph/Hz			
Air Flow		CFM 338	476	765	1300
Cooling Capacity		BTU/H 9408	13472	18493	29937
Heating Capacity		BTU/H 11353	15318	22158	36223
Power Input		W 21	47	82	224
Sound Pressure		dB(A) 43	50	56	58
Rated current 115V/220V		A 0.37/0.19	0.82/0.43	1.46/0.75	3.90/2.04
Net Dimensions (W x H x D)		in. 26-13/16x 11-3/16x26-13/16		32-11/16x11-3/8x32-11/16	38-9/16x 12-9/16x38-9/16
Net Weight		Lbs 64	69	82	118
Fan Speed		H/M/L			

PRODUCT DIMENSIONS



1.- values @H speed